


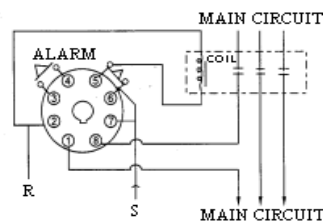
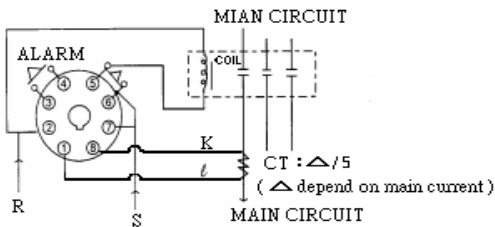
過電流保護繼電器

本系列產品用於檢測電流大小，如檢測出過大電流即切斷電流。

Model No.		JOC-1	JOC-2
Classification			
Appearance			
Features		Output relay will transfer to ON after time delay of 0.5 Sec while current exceeds the setting current (2~7A). RESET : Power off reset or excluding problem.	When current is over than the setting current, output relay will transfer to ON after 0.5 Sec duration Once current is less than set current, relay contacts will be switched to its original position after response time.
Surface Mounting		Socket base 8PFA	
Output Capacity		1N/O + 1N/C Separately	
Response Time of Relay		0.5 SEC Fixed	
Current Range		AC 2~7 Amp Adjustable	
Rated Voltage Range:85%~110%)		50/60Hz 110VAC , 220VAC	
LIFE	Mechanical	10,000,000 Times	
	Electrical AC220VPPF=1	500,000 Times	
ACCURACY	Repeat	+/- 2% Max	
	Setting	+/- 10% Max	
	Voltage	+/- 2% Max	
	Temperature	+/- 2% Max	
Reset time		0.2 Sec Max	
Ambient temp. & Humidity		-10~55Deg.C , 85% Max	

CONNECTION & OPERATIONAL DIAGRAMS

(1) Indirect connection (負載大於 7 安培時與比流器並聯) : (2) Direct connection (負載小於 7 安培時可直接串聯到控制器上，配線簡易) :



OPERATIONAL DIAGRAM

