


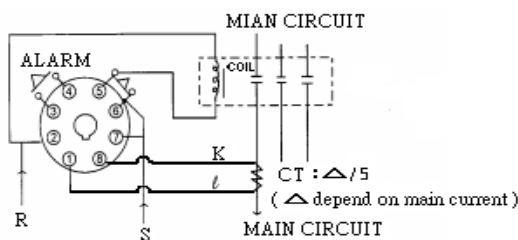
OVER CURRENT RELAY

Model No.		JOC-1	JOC-2
Classification			
Appearance			
Features		Output relay will transfer to ON after time delay of 0.5 Sec while current exceeds the setting current (2~7A). RESET : Power off reset or excluding problem.	When current is over than the setting current, output relay will transfer to ON after 0.5 Sec duration Once current is less than setting current, relay contacts will be switched to its original position after response time.
Surface Mounting		Socket base 8PFA	
Output Capacity		1N/O + 1N/C Separately	
Response Time of Relay		0.5 SEC Fixed	
Current Range		AC 2~7 Amp Adjustable	
Rated Voltage Range:85%~110%)		50/60Hz 110VAC , 220VAC	
LIFE	Mechanical	10,000,000 Times	
	Electrical AC220VPF=1	500,000 Times	
ACCURACY	Repeat	+/- 2% Max	
	Setting	+/- 10% Max	
	Voltage	+/- 2% Max	
	Temperature	+/- 2% Max	
Reset time		0.2 Sec Max	
Ambient temp. & Humidity		-10~55Deg.C , 85% Max	

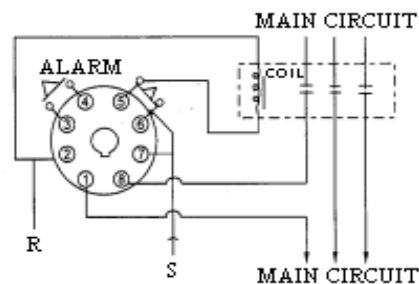
CONNECTION & OPERATIONAL DIAGRAMS

(1) Indirect connection (Main current more than 7 Amps) :

Paralleled to CT k & l



(2) Direct connection (Main current less than 7 Amps) :



OPERATIONAL DIAGRAM

