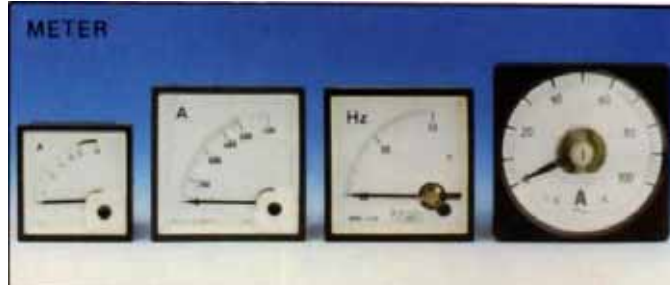


Panel Meters

General Specifications



Material	Acrylic Resin front cover, ABS casing, and PC glass fiber base.
Accuracy	CLASS 1.5% full scale (SR-96, SR-72, L-110, L-80, YS-12, YS-10, TH-120S, TH-100S) CLASS 2.5% full scale (YS-8, TH-670, TH-65, TH-50, TH-38)
Ambient Temperature	-10 ~ +50Deg.C (operating)
Ambient Humidity	85% max

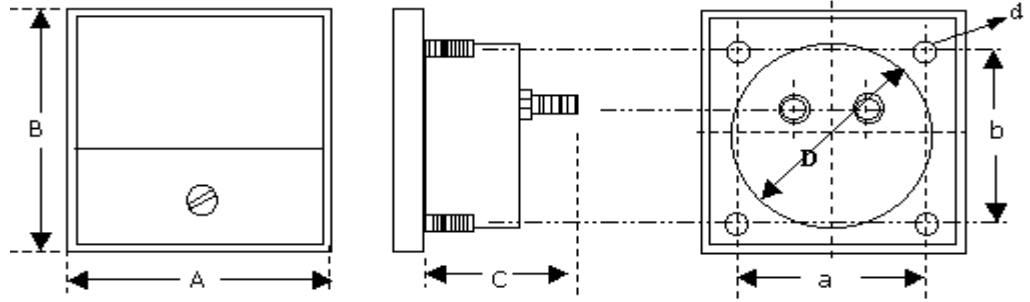
Movement	Measuring Range	Model					
		SR-96 SR-72 YS-12	L-110 L-80	YS-10 YS-8 TH-670	TH-120S TH-100S TH-65	TH-50	TH-38
Moving Iron	AC 1A-30A	X		X	X	X	
	AC 1A-60A	X		X	X		
	AC 150V-600V	X		X	X	X	
Moving Coil	DC 50 μ A-30A	X	X	X	X	X	X
	DC 50 μ A-60A	X	X	X	X		
	DC 50mV-600V	X	X	X	X	X	X
	AC(— —)10V-500V	X	X	X	X	X	X
	AC(— —)100 μ A-5A	X	X	X	X	X	X
	KW	X	X				
	PF (COS ϕ)	X	X				
	HZ (45-65Hz)	X	X	X	X		
	Rpm	X	X	X	X	X	X
Maximum Demand	X(SR-96)						

Ammeter	For ranges above DC 30A, use a basic 50mV meter combined with an external shunt. For ranges above AC 60A, use a basic 5A AC Ammeter combined with an external CT. (directly) For ranges over than AC 5A, use an external CT with a 5A AC Ammeter (indirectly)
Voltmeter	Ranges higher than DC 300V require a external Multiplier with a 1mA Voltmeter. Ranges above AC 600 Volts require a basic 150V meter combined with an external PT.
Frequency Meter	Rating: 110V, 220V, 380V, 440V / 45-65HZ For a rating higher than 440V, use an PT with a 110V instrument
Power Factor Meter	Rating: 110V, 220V, 380V, 440V / 5A For a rating other than listed above, use an external PT with a 110V/5A instrument.
Kilowatt Meter	Rating: 110V, 220V, 380V, 440V / 5A For a rating other than listed above, use external CT or PT with a 110V / 5A meter.
Maximum Demand Meter	2 pointer or 3 pointer instruments

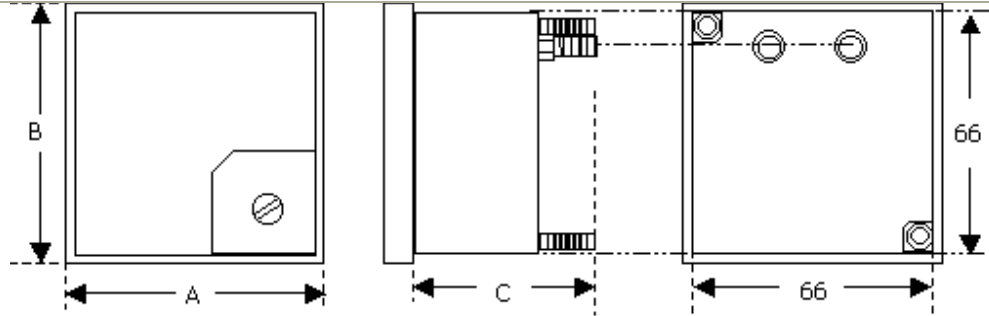
DIMENSIONS & PANEL CUT-OUT

Model	Dimensions (A*B*C)	Panel cut-out (D)	Center to center distance of mounting screws		
			a	b	d
SR-96	96*96*65	90*90	-	-	-
SR-72	72*72*55	66*66	-	-	-
L-110	110*110*95	φ102	90	90	φ6.0
L-80	80*80*95	φ66	65	65	φ3.5
YS-12	120*120*70	φ110	100	100	φ6.0
YS-10	100*100*50	φ84	79	79	φ3.5
YS-8	80*80*40	φ65	65	65	φ3.5
YH-120S	120*100*40	φ70	104	82	φ5.0
YH-100S	100*80*40	φ65	82	63	φ5.0
TH-670	70*60*40	φ52	48	48	φ3.5
TH-65	66*66*40	φ52	51	51	φ3.5
TH-50	51*51*40	φ45	38	38	φ3.5
TH-38	44*44*35	φ38	32	32	φ3.5

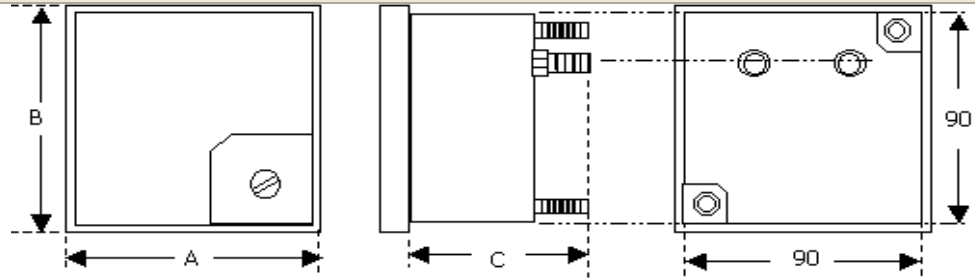
TH-38
TH-50
TH-65
TH-670
YS-8
YS-10
YS-12
TH-100S
TH-120S



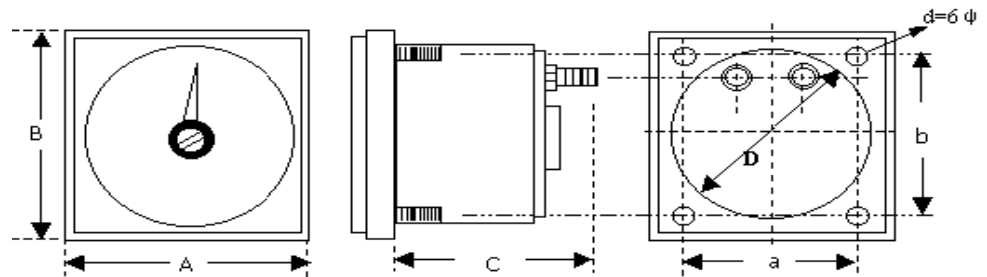
SR-72



SR-96



L-110



L-80

