



Push Button SW



ACCESSORIES & SPARE PARTS

MOUNTING ADAPTER



22 / 30mm MOUNTING NUT

fit for 22.5mm diameter →



← fit for 30mm diameter

LENS

For non-illuminated flat head operator

- a. Colors available : Black, Blue, Green, Red, Yellow, White
- b. Available printed markings (in black or white color) :
ON, OFF, FORWARD, REVERSE, START, STOP, RESET, ↑, etc
(For other markings please contact us.)



For illuminated push-button operator and pilot lamp

- a. Color available : Blue, Green, Red, Yellow, White



For double push-button operator

- a. Color available : Red, Yellow, White



LAMP HOLDER

APPEARANCE	TYPE	RATED VOLTAGE	TYPE	RATED VOLTAGE
	LH-110	110VAC	LH-12	12V
	LH-220	220VAC	LH-24	24VAC/DC
			LH-48	48V

BULB : BA9S-10*28mm, 2W max

Neon bulb

Color : Red bulbs for white, red, and yellow lens ; Green bulbs for green and blue lens
Voltage : 110V, 220V

Incandescent bulbs

Suitable for all color lens
Voltage : 24V, 30V, 48V

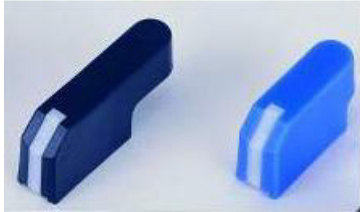
CAUTION : Do not use bulbs exceed 2W.

LED bulbs

Color : Red, Green, Yellow, white, blue
Voltage : 12V, 24V, 110Vac, 220Vac

KNOBS FOR SELECTOR

- a. Colors available : Black, Blue, Green, Red, Yellow
- b. Providing short knob and lever (long handle) for choices


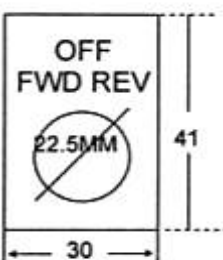

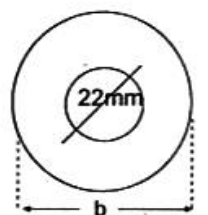


TERMINAL PROTECTING COVER

- a. For contact block
 - Green color for N / O contact
 - Red color for N / C contact
- b. For lamp holder
 - Blue color



LEGEND PLATES

<p>CLASSIFI- CATION & DESCRIPTION</p>	 <p>Plastic material</p>	 <p>Aluminum material</p>	 <p>Aluminum material</p>	 <p>For emergency mushroom head</p> <ul style="list-style-type: none"> • Color : Yellow • Dimension : b=45 or 60 mm
<p>STANDARD MARKINGS</p>	<p>START, STOP, ON, OFF, FORWARD, REVERSE, OPEN,CLOSE, UP, DOWN, HIGH, LOW, RESET, EMER, STOP,FWD REV, MAN AUTO, HIGH LOW, UP DOWN, OPEN CLOSE, OFF ON, HAND OFF AUTO,FWD OFF REV, UP OFF DOWN, etc.</p>			